

# Rendezvous Batavia, air views

## The importance of Batavia seen from the air in 1928

Dirk Teeuwen MSc

### A selection of aerial pictures

From> Vries, de H. M: The importance of Java seen from the air; Batavia  
(printed by Kolff & Co) 1928

#### Bogor Palace 1928

From "The importance of Java from the air", 1928  
Collection Dirk Teeuwen, Holland



THE PALACE OF H.E. THE GOVERNOR GENERAL AT BUITENZORG.

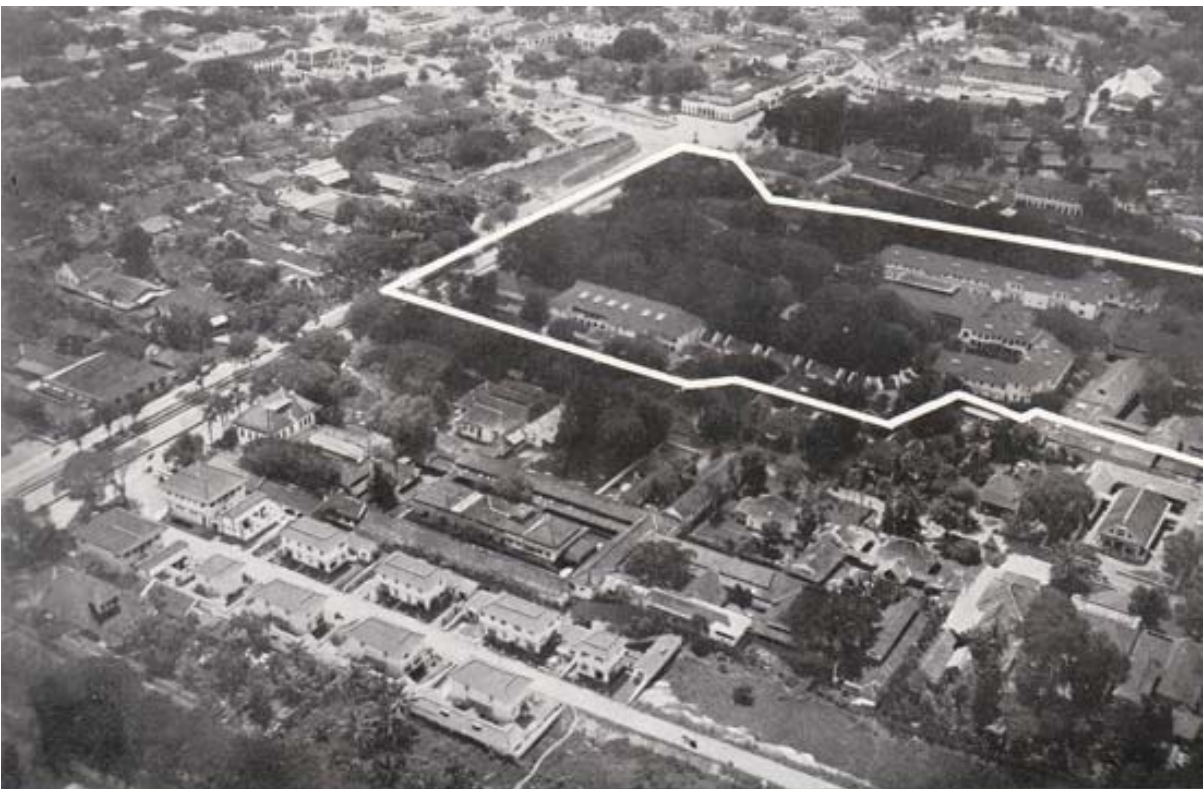
Written, printed, edited; Batavia - Jakarta 1928  
Library Dirk Teeuwen, Holland



From "The importance of Java from the air"

Collection Dirk Teeuwen, Holland

EXTENSIVE GROUNDS AND BUILDINGS OF THE HOTEL DES INDES, WELTEVREDEN.



From "The importance of Java from the air" 1928

Collection Dirk Teeuwen, Holland

THE HOTEL DES INDES, WELTEVREDEN.

Written, printed, edited; Batavia - Jakarta 1928  
Library Dirk Teeuwen, Holland





From "The importance of Java from the air" 1928

Collection Dirk Teeuwen, Holland

**NIL-mij, insurance company along Noordwijk (near Harmoni)**

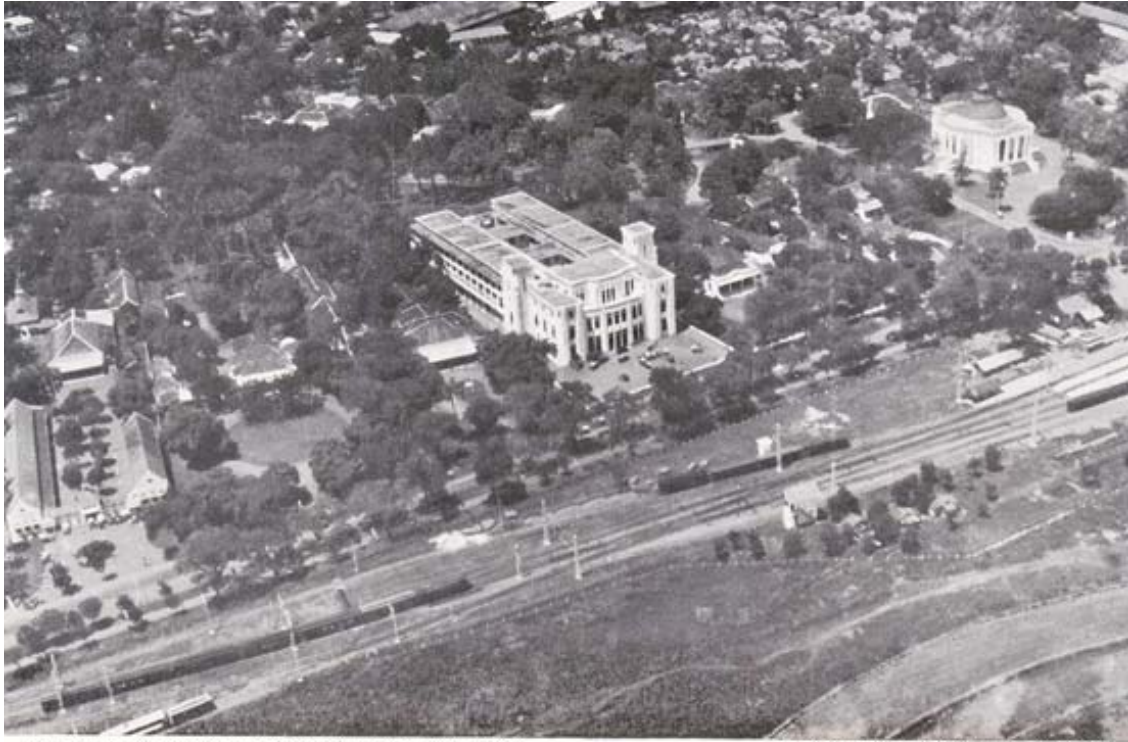


From "The importance of Java from the air" 1928

Collection Dirk Teeuwen, Holland

**MEDICAL UNIVERSITY. WELTEVREDEN.**

**Written, printed, edited; Batavia - Jakarta 1928  
Library Dirk Teeuwen, Holland**



From "The importance of Java from the air" 1928

Collection Dirk Teeuwen, Holland

THE IMPOSING HEAD OFFICE BUILDING OF THE K. P. M. ON THE KING'S SQUARE, WELTEVREDEN.



From "The importance of Java from the air" 1928

Collection Dirk Teeuwen, Holland

PALACE OF H.E. THE GOVERNOR GENERAL ON THE KING'S SQUARE, WELTEVREDEN.

Written, printed, edited; Batavia - Jakarta 1928  
Library Dirk Teeuwen, Holland





From "The importance of Java from the air" 1928 Collection Dirk Teeuwen, Holland  
HERTOOGSPARK, WELTEVREDEN, WHERE THE BUILDINGS OF THE "VOLKSRAAD" AND THE COUNCIL OF  
THE INDIES ARE SITUATED.



From "The importance of Java from the air" 1928 Collection Dirk Teeuwen, Holland  
THE ROMAN CATHOLIC CATHEDRAL AND WATERLOO SQUARE, WELTEVREDEN.

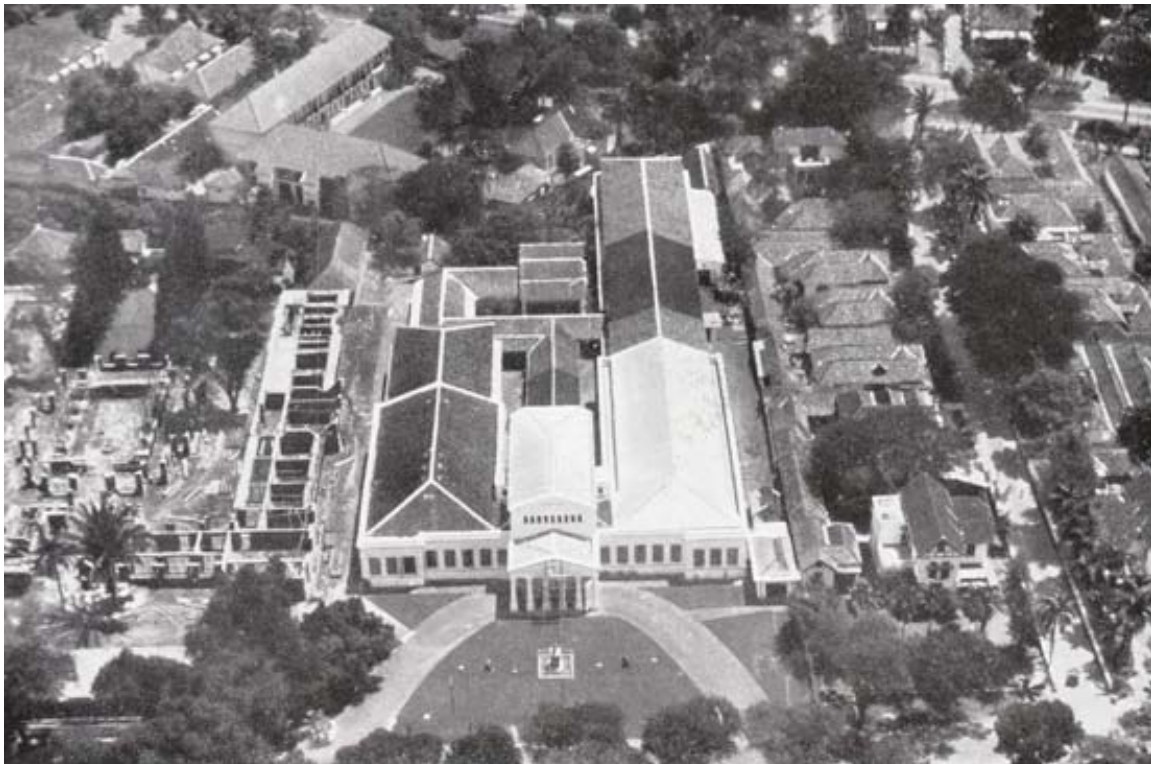
**Written, printed, edited; Batavia - Jakarta 1928  
Library Dirk Teeuwen, Holland**



From "The importance of Java from the air" 1928

Collection Dirk Teeuwen, Holland

DEPARTMENT OF FINANCE AND HIGH COURT OF JUSTICE, WATERLOO SQUARE, WELTEVREDEN.



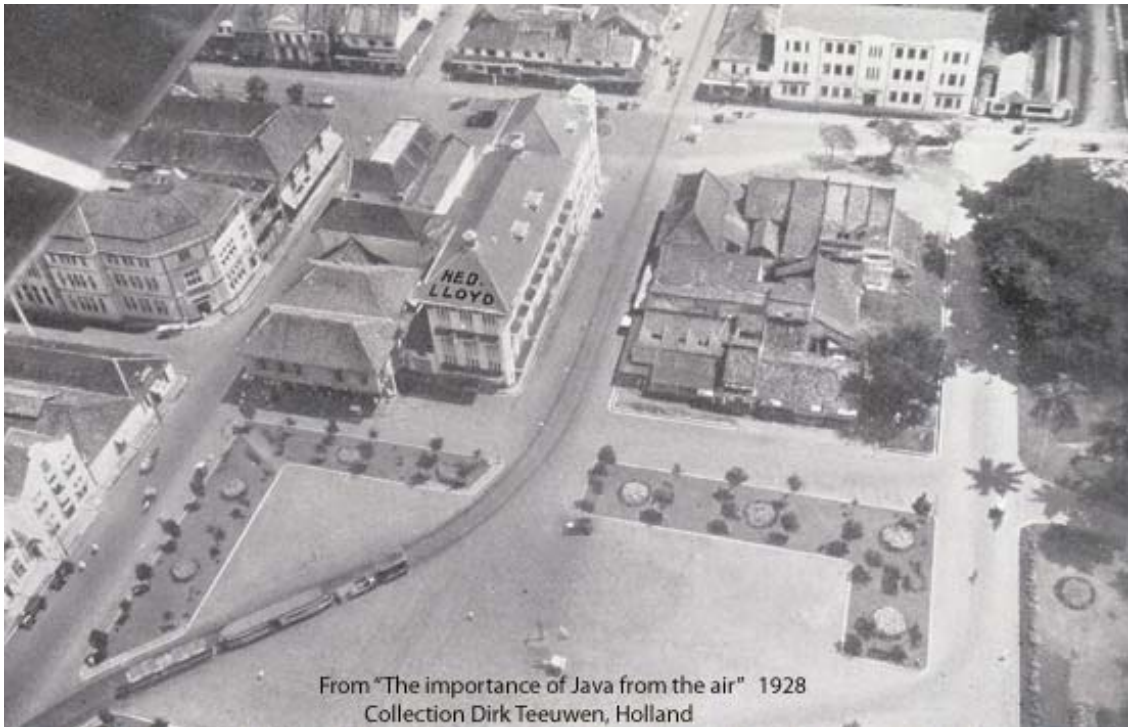
From "The importance of Java from the air" 1928

Collection Dirk Teeuwen, Holland

THE MUSEUM, KONINGSPLEIN (KING'S SQUARE), WELTEVREDEN.

Written, printed, edited; Batavia - Jakarta 1928  
Library Dirk Teeuwen, Holland





From "The importance of Java from the air" 1928  
Collection Dirk Teeuwen, Holland

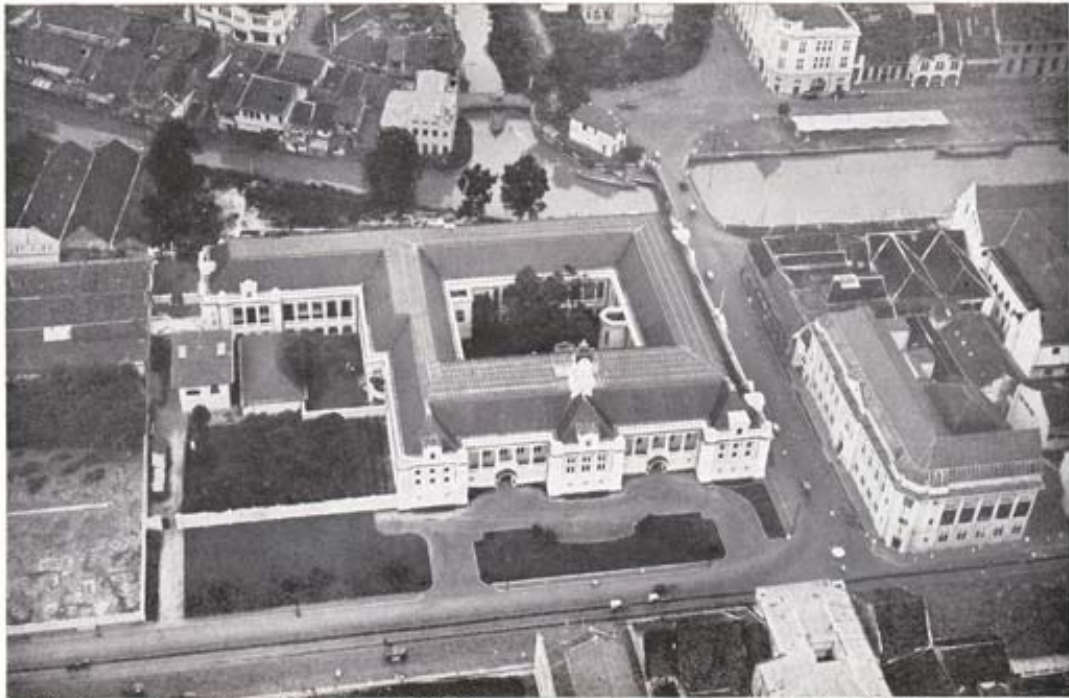
**Old Batavia, Town Hall Square and Prinsenstraat (JI Cengke) to the north**



From "The importance of Java from the air" 1928  
ARRANGEMENT OF THE OVERHEAD WIRES "SIEMENS SCHUCKERT SYSTEM" AT ONE OF THE STATIONS  
Collection Dirk Teeuwen, Holland

**Railway Station "Batavia-Zuid", renovated in 1930, now Stasiun Kota**

**Written, printed, edited; Batavia - Jakarta1928  
Library Dirk Teeuwen, Holland**



From "The importance of Java from the air" 1928

Collection Dirk Teeuwen, Holland

HEAD OFFICE OF THE JAVA BANK BATAVIA

**Kali Besar East (below)**



From "The importance of Java from the air" 1928

Collection Dirk Teeuwen, Holland

OFFICE AND PRINTING WORKS OF THE DAILY NEWSPAPER "HET NIEUWS V. D. DAG VOOR NEDERLANDSCH INDIE", BATAVIA.

**Written, printed, edited; Batavia - Jakarta 1928  
Library Dirk Teeuwen, Holland**





From "The importance of Java from the air" 1928

Collection Dirk Teeuwen, Holland

OLD BATAVIA, THE CENTRE OF THE BUSINESS QUARTER.

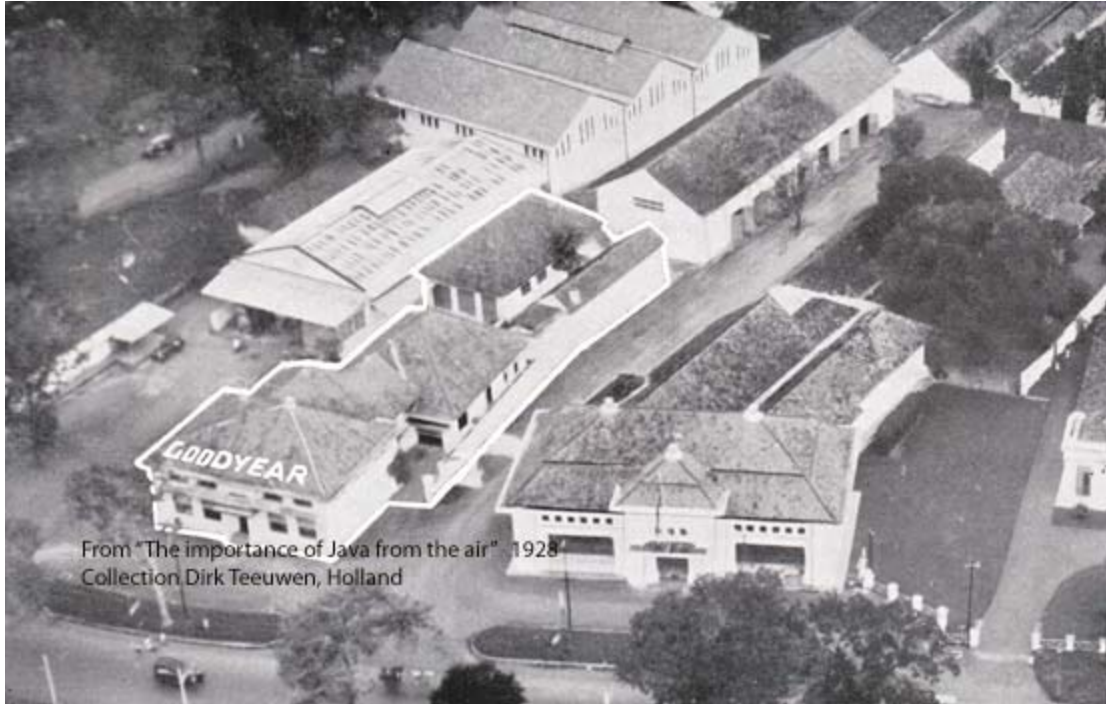


From "The importance of Java from the air" 1928

Collection Dirk Teeuwen, Holland

KALI BESAR, THE CENTRE OF THE BUSINESS QUARTER IN BATAVIA, SHOWING THE PREMISES OF VARIOUS BANKS AND BUSINESS HOUSES.

**Written, printed, edited; Batavia - Jakarta 1928  
Library Dirk Teeuwen, Holland**



From "The importance of Java from the air" 1928  
Collection Dirk Teeuwen, Holland

**Goodyear, rubber and tyres, Batavia**



From "The importance of Java from the air" 1928

Collection Dirk Teeuwen, Holland

**HEAD OFFICE OF ERDMANN & SIELCKEN, SUGAR EXPORTERS (ESTABLISHED 1875) AT BATAVIA.**

**Written, printed, edited; Batavia - Jakarta 1928  
Library Dirk Teeuwen, Holland**





From "The importance of Java from the air" 1928

Collection Dirk Teeuwen, Holland

STATE RAILWAY STATION AT TANDJONG PRIOK, THE HARBOUR OF BATAVIA.



From "The importance of Java from the air" 1928

Collection Dirk Teeuwen, Holland

EXTENSIVE MOTOR CAR ASSEMBLY PLANT OF GENERAL MOTORS JAVA, TANDJONG PRIOK.

Written, printed, edited; Batavia - Jakarta1928  
Library Dirk Teeuwen, Holland



From "The importance of Java from the air" 1928 Collection Dirk Teeuwen, Holland  
DEPARTURE OF A MAIL STEAMER FROM THE QUAY AT TANDJONG PRIOK



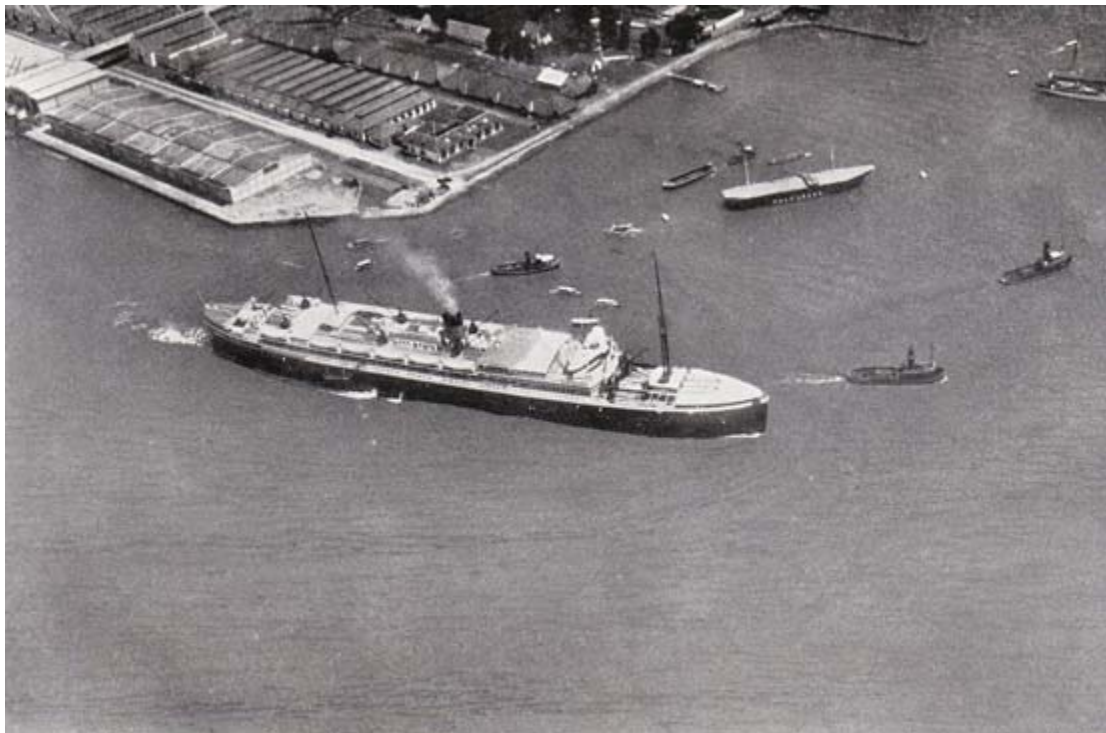
From "The importance of Java from the air" 1928 Collection Dirk Teeuwen, Holland  
VIEW OF TANDJONG PRIOK, THE HARBOUR OF BATAVIA.

**Written, printed, edited; Batavia - Jakarta 1928**  
**Library Dirk Teeuwen, Holland**





From "The importance of Java from the air" 1928 Collection Dirk Teeuwen, Holland  
THE M.S. "CHRISTIAAN HUYGENS" ALONGSIDE THE QUAY OF THE "NEDERLAND" STEAMSHIP CO.  
TANDJONG PRIOK.



From "The importance of Java from the air" 1928 Collection Dirk Teeuwen, Holland  
THE M.S. "CHRISTIAAN HUYGENS" LEAVING THE HARBOUR OF TANDJONG PRIOK.

Written, printed, edited; Batavia - Jakarta 1928  
Library Dirk Teeuwen, Holland



From "The importance of Java from the air" 1928

Collection Dirk Teeuwen, Holland

THE M.S. "INDRAPOERA" ALONGSIDE THE QUAY OF THE "ROTTERDAM LLOYD" AT TANDJONG PRIOK.



From "The importance of Java from the air" 1928

Collection Dirk Teeuwen, Holland

THE M.S. "INDRAPOERA" OF THE "ROTTERDAM LLOYD" LEAVING THE HARBOUR OF TANDJONG PRIOK.

**Written, printed, edited; Batavia - Jakarta 1928  
Library Dirk Teeuwen, Holland**





From "The importance of Java from the air" 1928

Collection Dirk Teeuwen, Holland

VIEW OF THE K. P. M. HARBOUR AT TANDJONG PRIOK



From "The importance of Java from the air" 1928

Collection Dirk Teeuwen, Holland

THE S.S. "TJISAROE" MOORED ALONGSIDE THE JAVA CHINA JAPAN LINE QUAY AT TANDJONG PRIOK

Written, printed, edited; Batavia - Jakarta 1928  
Library Dirk Teeuwen, Holland



From "The importance of Java from the air" 1928

Collection Dirk Teeuwen, Holland

THE S.S. "TJISAROE" OF THE JAVA CHINA JAPAN LINE LEAVING THE HARBOUR OF TANDJONG PRIOK FOR HONGKONG.



From "The importance of Java from the air" 1928

Collection Dirk Teeuwen, Holland

QUAY AND ESTABLISHMENT OF THE "OCEAN" STEAMSHIP CO. AT BATAVIA (TANDJONG PRIOK).

Written, printed, edited; Batavia - Jakarta 1928  
Library Dirk Teeuwen, Holland





From "The importance of Java from the air" 1928

Collection Dirk Teeuwen, Holland

OFFICE AND GODOWNS OF THE JAVA VEEM, TANDJONG PRIOK.

**Veem means warehouse company**

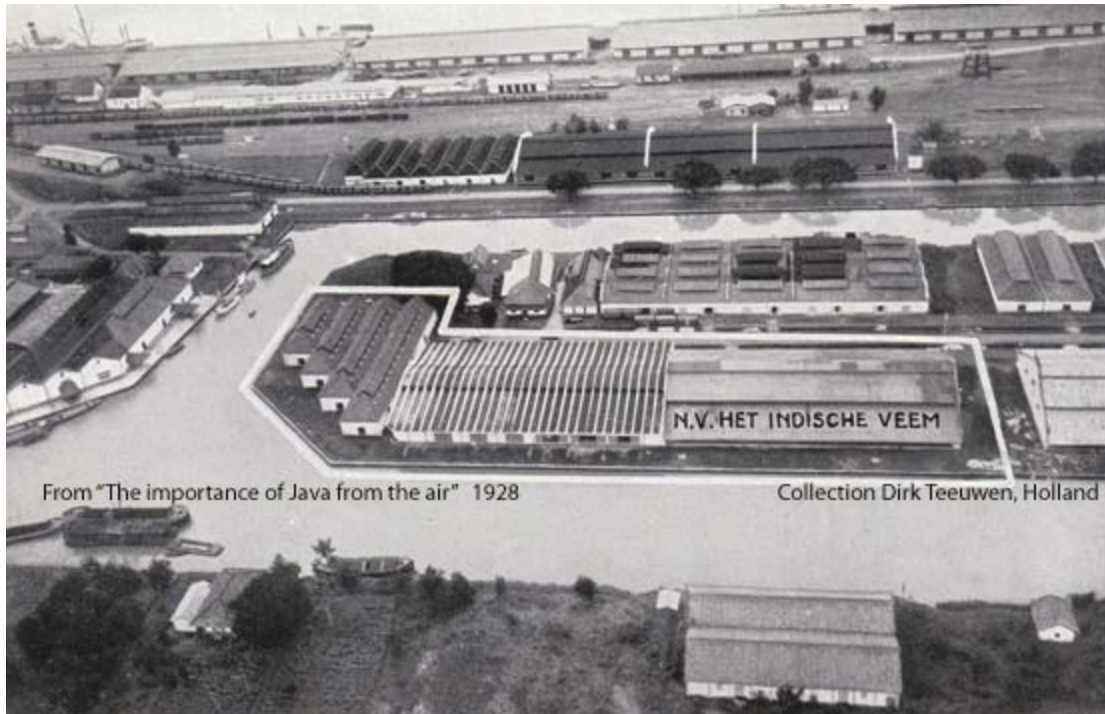


From "The importance of Java from the air" 1928

Collection Dirk Teeuwen, Holland

INTERIOR OF A GODOWN OF THE JAVA VEEM.

**Written, printed, edited; Batavia - Jakarta1928  
Library Dirk Teeuwen, Holland**



From "The importance of Java from the air" 1928

Collection Dirk Teeuwen, Holland

**Warehouse company "Indisch Veem", Tandjong Priok**



From "The importance of Java from the air" 1928

Collection Dirk Teeuwen, Holland

VIEW OF MEESTER CORNELIS, A SUBURB OF BATAVIA.

**Written, printed, edited; Batavia - Jakarta 1928  
Library Dirk Teeuwen, Holland**





From "The importance of Java from the air" 1928

Collection Dirk Teeuwen, Holland

EDAM ISLAND IN THE BAY OF BATAVIA, WITH LIGHTHOUSE.



From "The importance of Java from the air" 1928

Collection Dirk Teeuwen, Holland

CORAL ISLAND AND QUARANTINE STATION IN THE BAY OF BATAVIA

**Written, printed, edited; Batavia - Jakarta 1928  
Library Dirk Teeuwen, Holland**

**End**