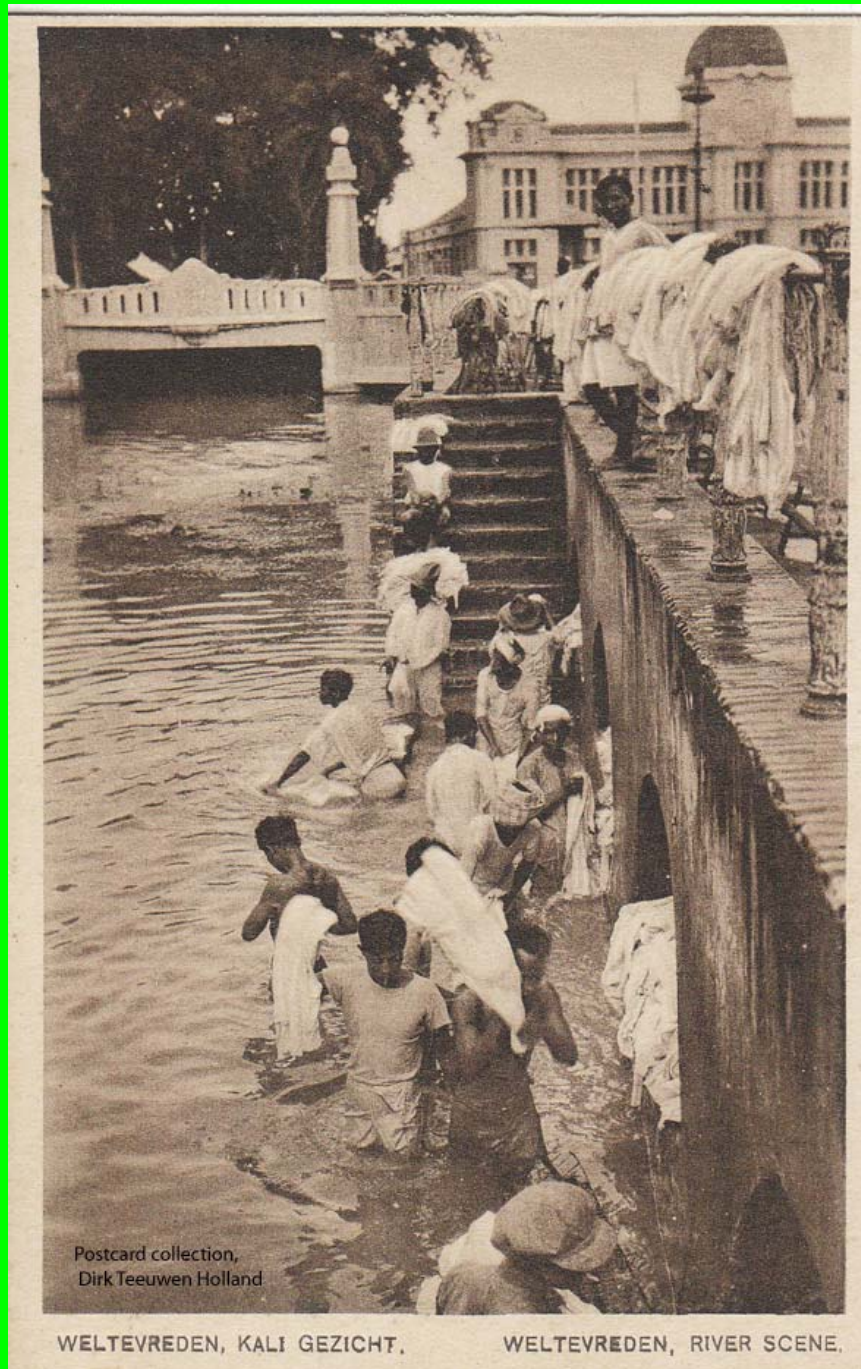


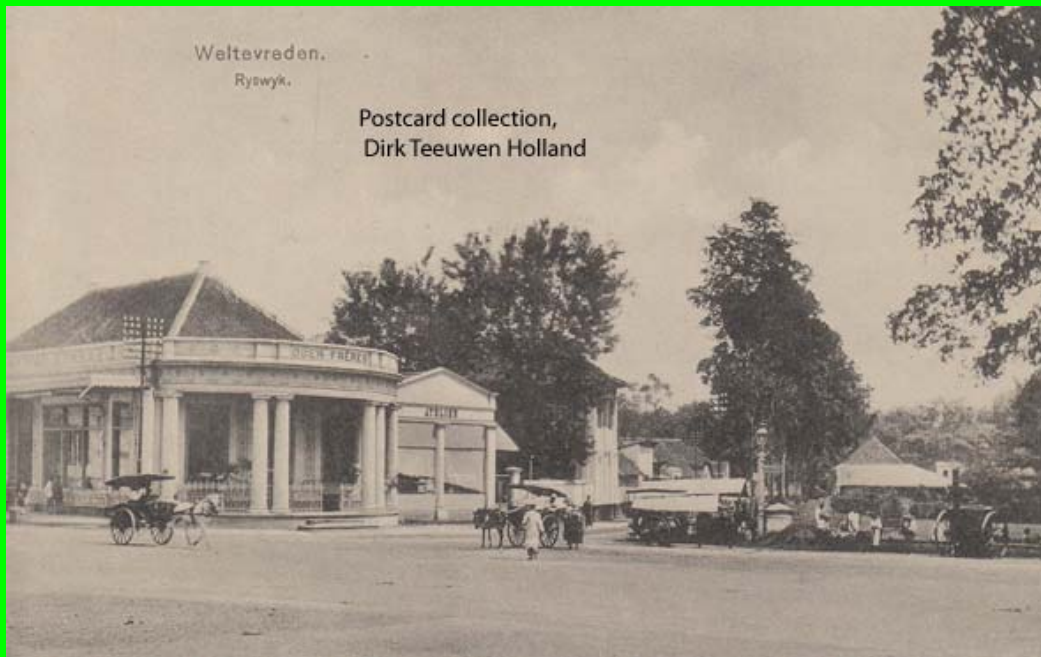
Harmoni Square, old postcards Jakarta-Batavia

Dirk Teeuwen MSc, Holland

drs.dirk.teeuwen@gmail.com

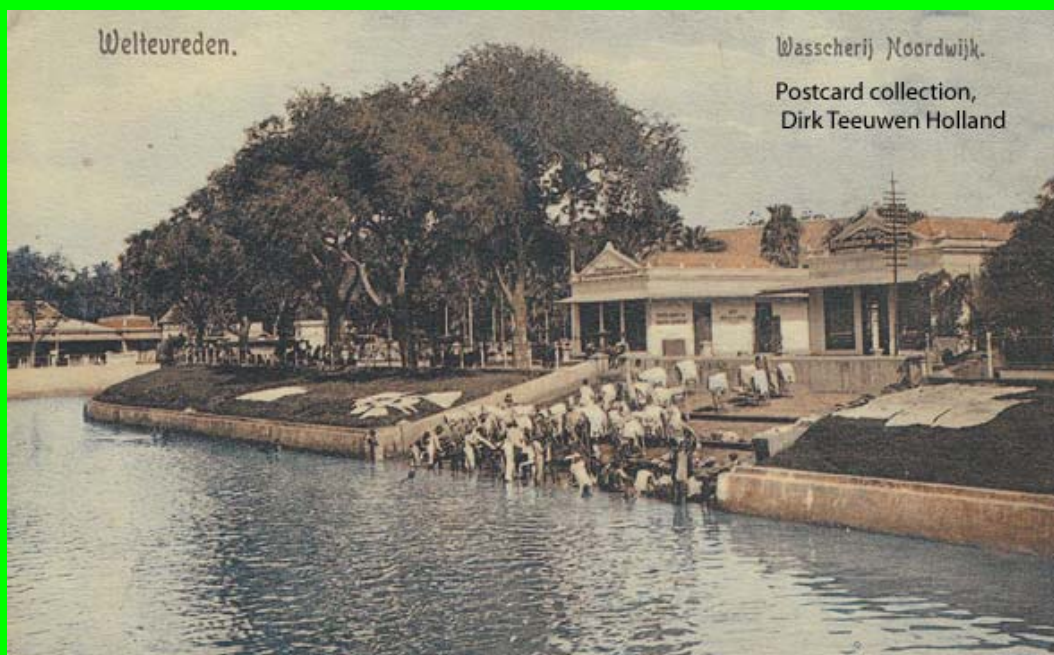


1. Kali east from Harmoni (Noordwijk, Jl Ir Juanda); Jakarta-Batavia circa 1920

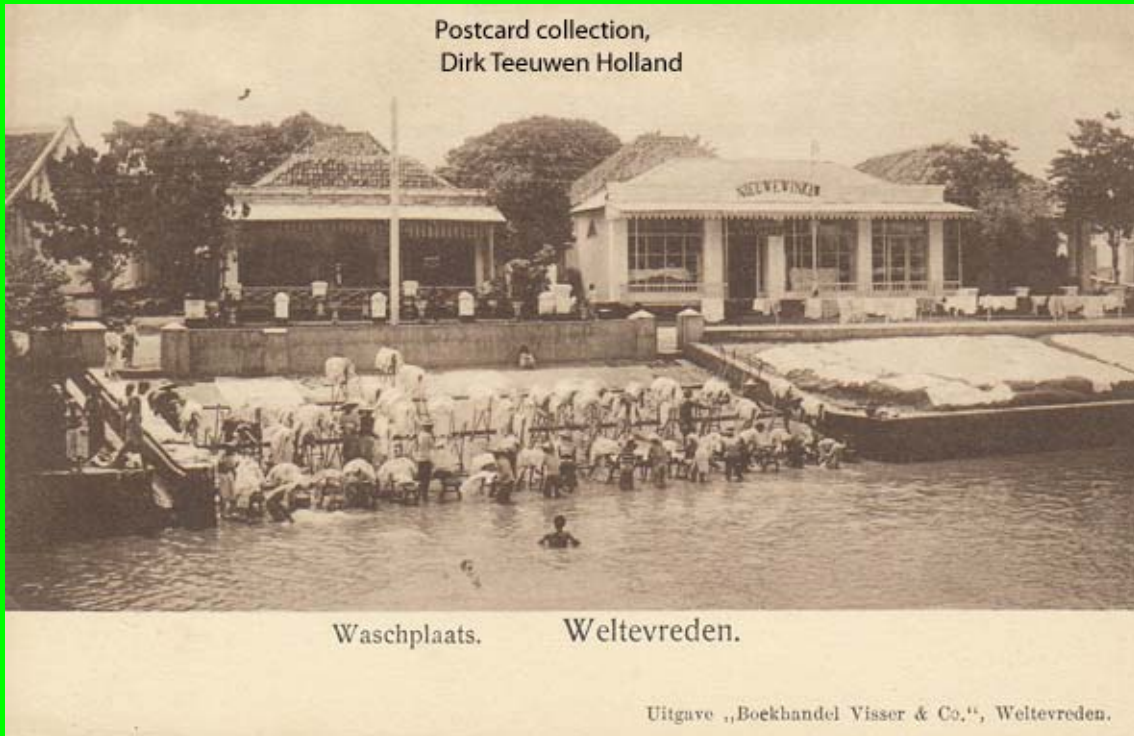


2. Harmoni south west, corner Jl Majapahit and Jl Surypranoto; Jakarta-Batavia circa 1900

In the center, in front of the shop Oger Frères, we look in to Djaga (Street) Monet (Jl Suryopranoto).



3. Western end of Noordwijk (Jl Ir Juanda); Jakarta-Batavia 1901
Situation before the bridge, on photo 1, was constructed. Walking behind the cleaning activities to the left following the bend of the canal we arrive at the old bridge. This bridge "around the corner" is not visible on this picture.

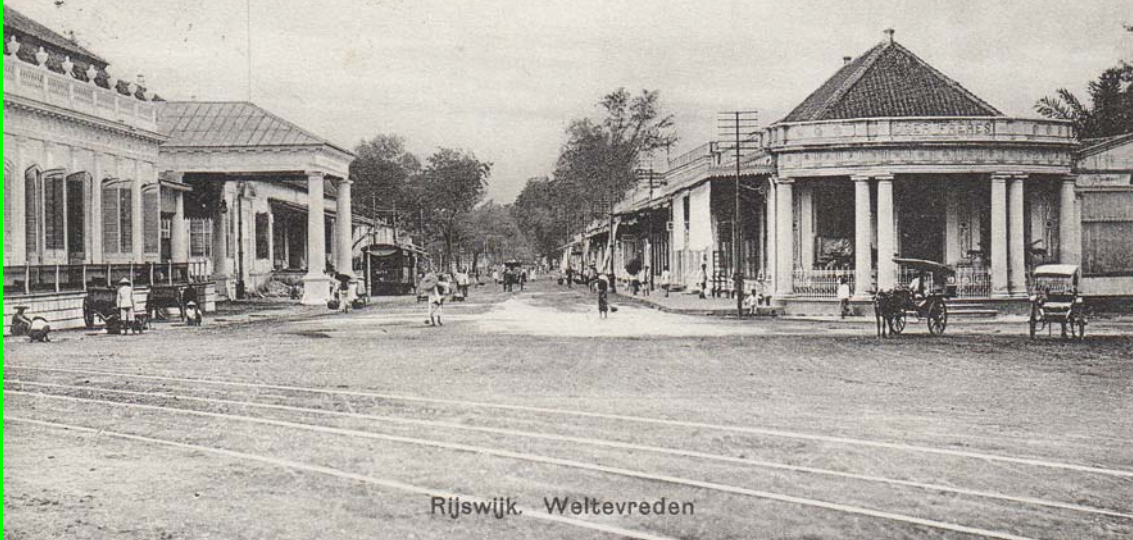


4. Same view (see 3.), but now right in front from the other side of the canal (from Rijswijk, JI Veteran); Jakarta-Batavia circa 1900



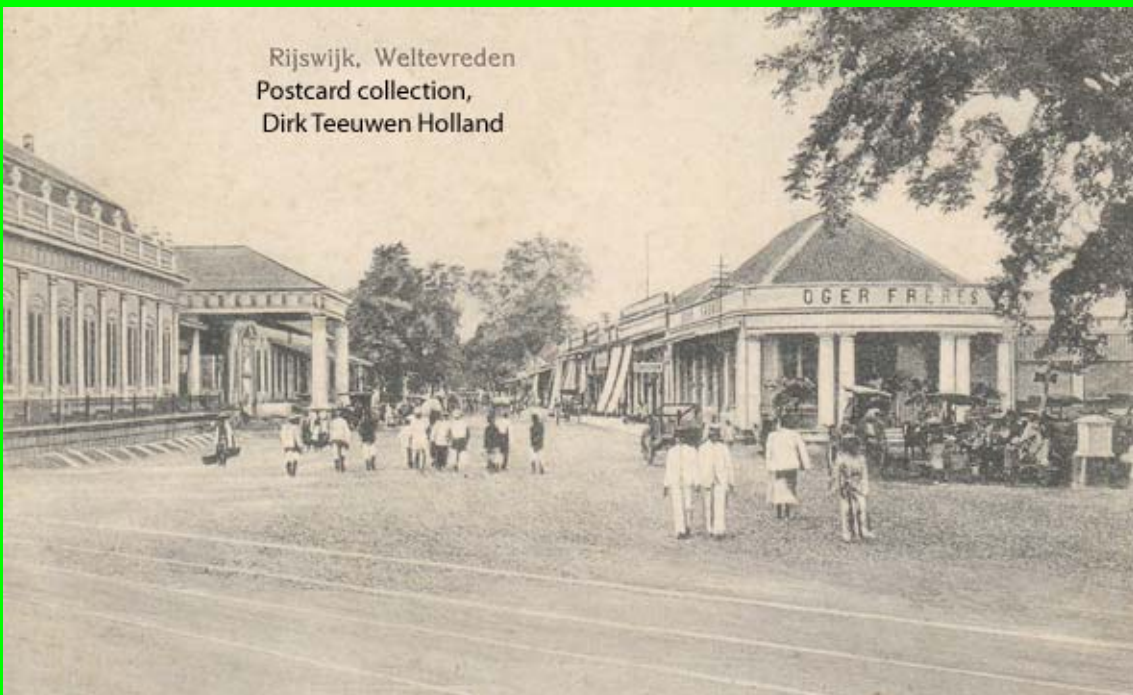
5. Clubhouse Harmonie at the south east corner of Harmoni Square, along Rijswijk (JI Veteran); Jakarta-Batavia circa 1900

Postcard collection,
Dirk Teeuwen Holland



6. Southern end of Harmoni Square; Jakarta-Batavia 1909
We are looking into Rijswijkse Straat (JI Majapahit), left Clubhouse Harmoni.
Right the shop Oger Frères, men's fashion.

Rijswijk. Weltevreden
Postcard collection,
Dirk Teeuwen Holland



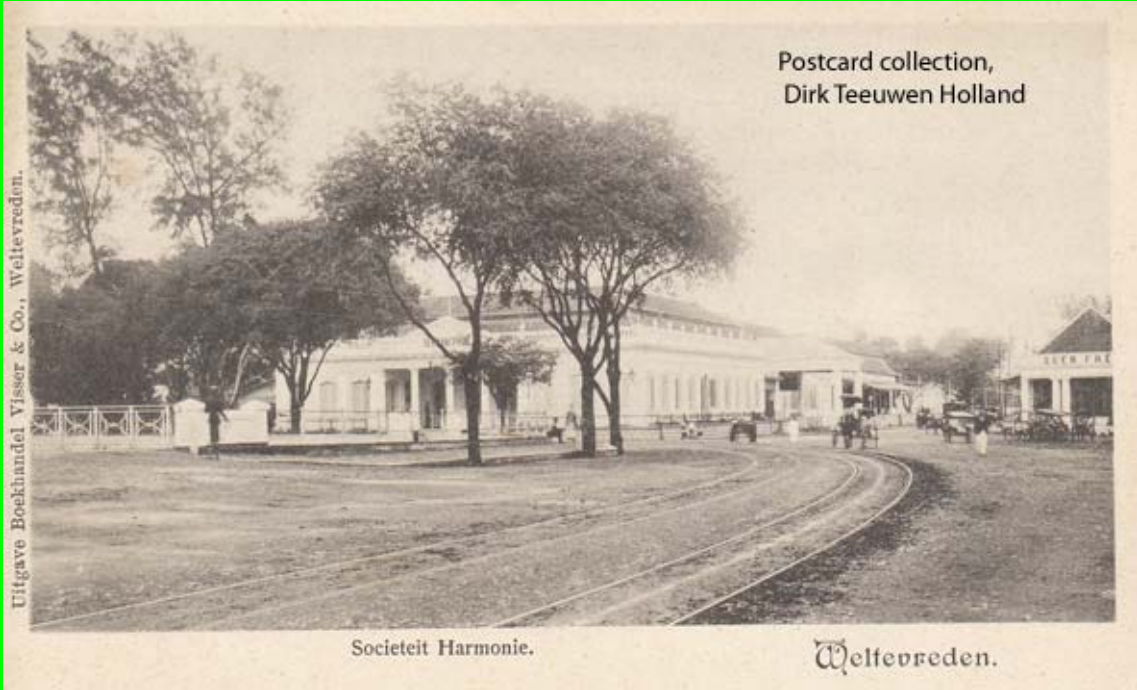
7. See 6; Jakarta-Batavia circa 1900



Postcard collection,
Dirk Teeuwen Holland

Gezicht op Rijswijk (Weltevreden). *Groet uit Batavia.*
Uitg. H. M. v. Dorp & Co., Batavia.

8. See 6 and 7; Jakarta-Batavia circa 1900

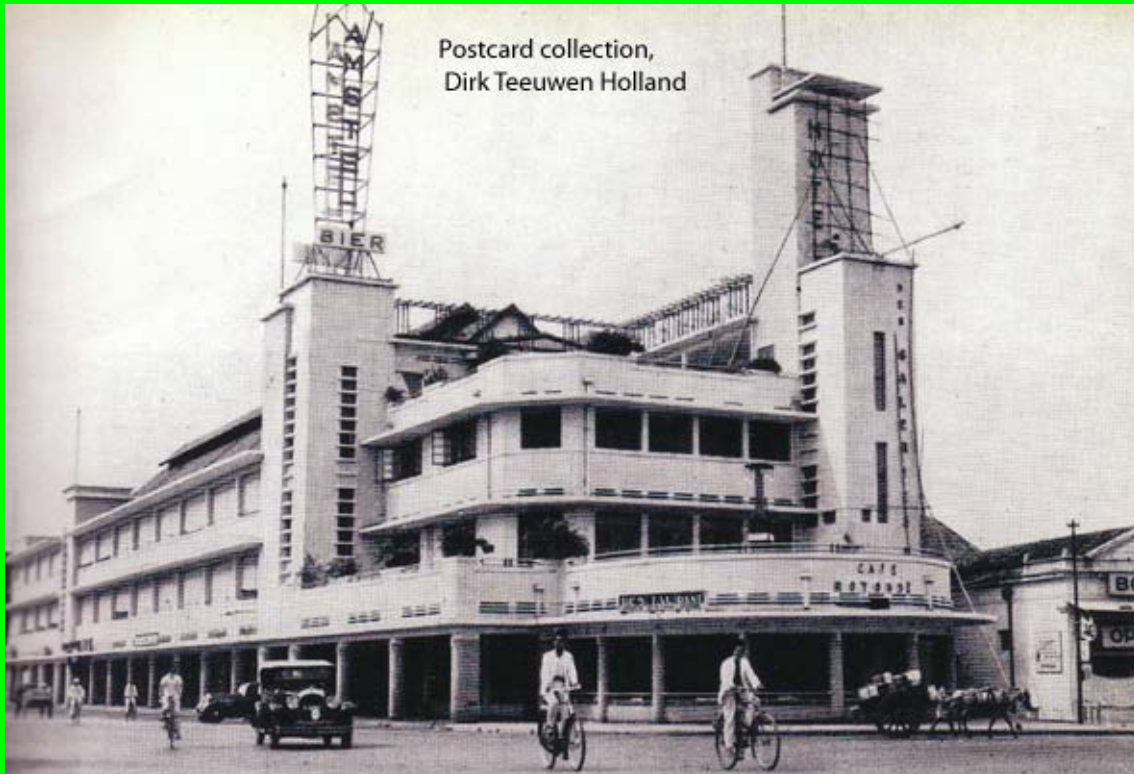


Postcard collection,
Dirk Teeuwen Holland

Uitgave Boekhandel Visser & Co., Weltevreden.

Societeit Harmonie. *Weltevreden.*

9. See 8.



Postcard collection,
Dirk Teeuwen Holland

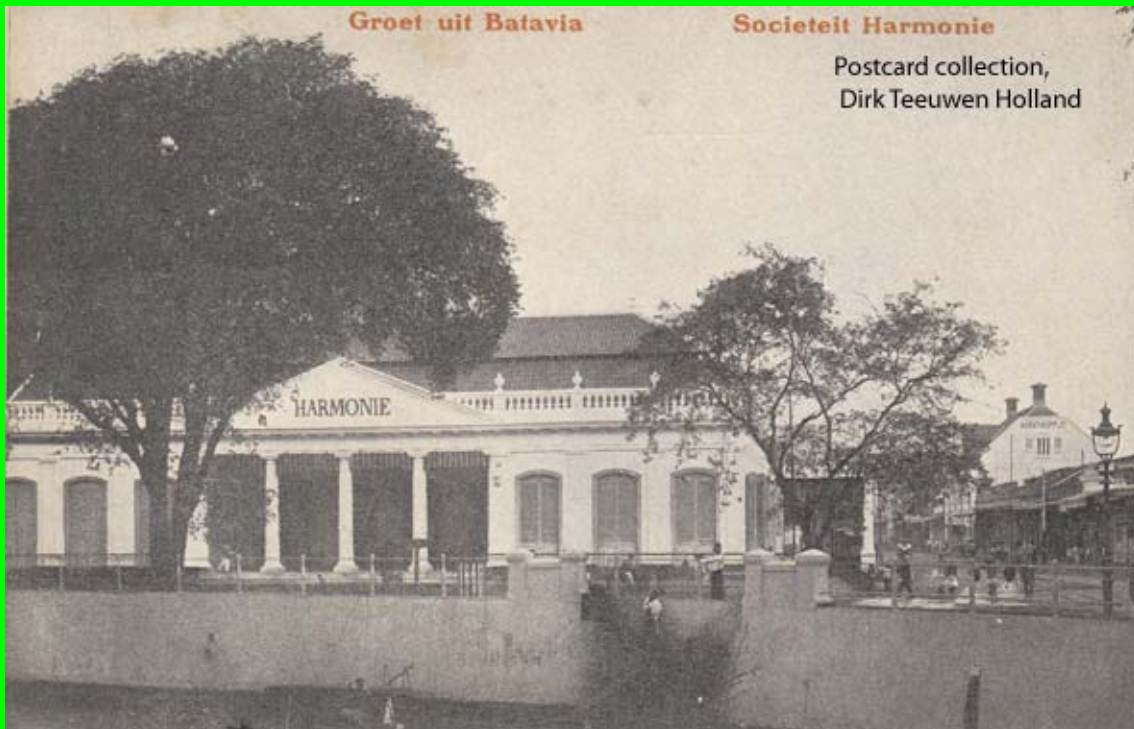
10. Nort east corner of Harmoni Square; Jakarta-Batavia 1936
We see here Hotel Café Restaurant "Des Galeries" at the southern end of Molenvliet East (JI Hayam Wuruk). "Des Galleries" is still there, but terribly dilapidated.



Batavia (Weltevreden)
1031. Overkluizing rivier b/d Harmonie

Postcard collection,
Dirk Teeuwen Holland

11. Clubhouse Harmonie; Jakarta-Batavia 1922



12. Jakarta-Batavia circa 1905



13. Harmoni Square far away to the south; Jakarta-Batavia 1924
The canal is the s-called "Molenvliet" (Windmill Canal). Left JI Hayam waruk,
right JI Gajah Mada.

End