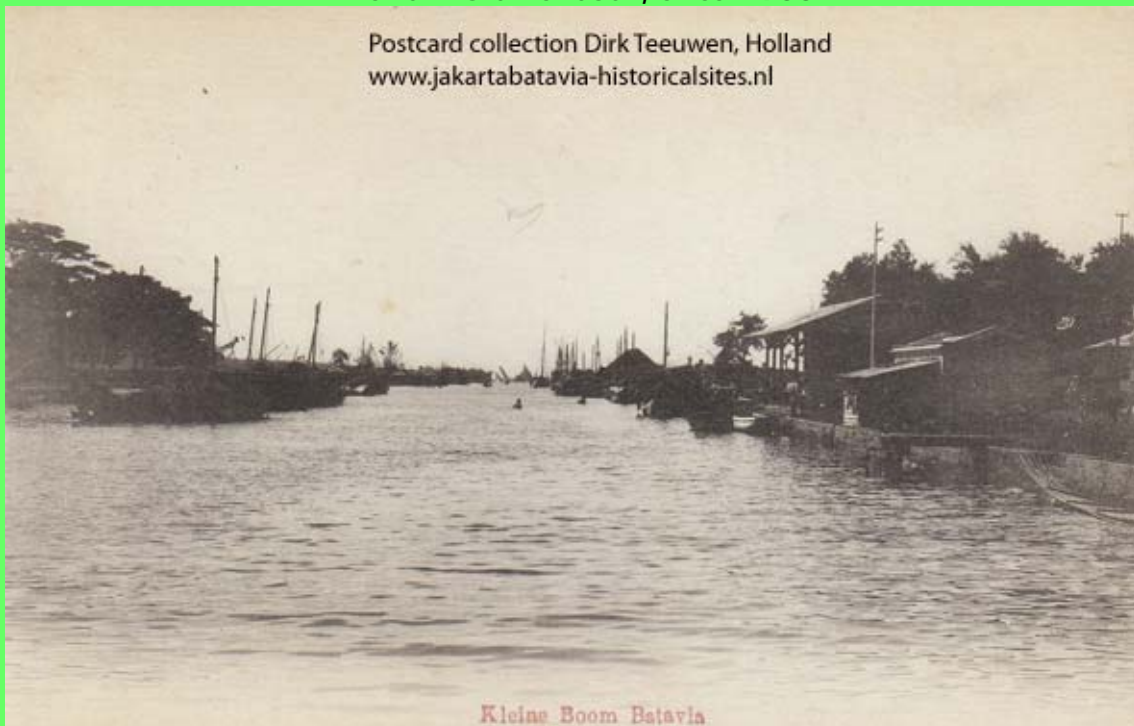


1. Sunda Kelapa on old postcards, collection Dirk Teeuwen MSc Holland

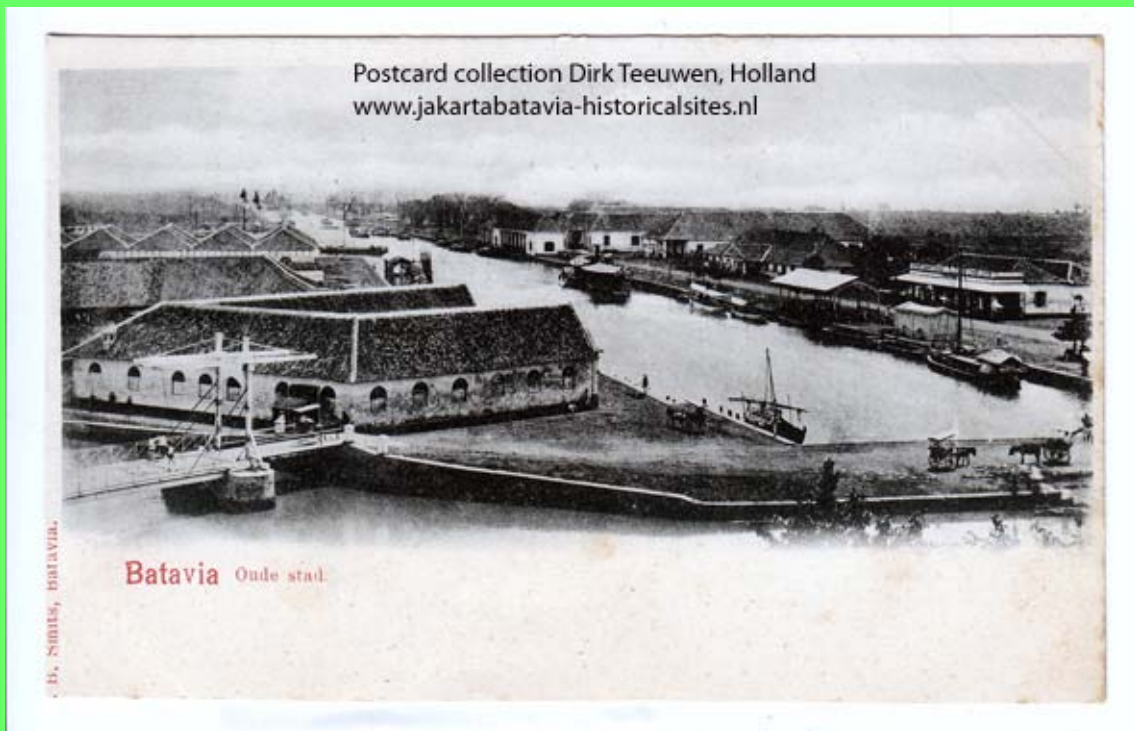


1. and 2 Old harbour, circa 1900





3. Old harbour, Sunda Kelapa to the north, 1903



4. Sunda Kelapa, 1870

Postcard collection Dirk Teeuwen, Holland
www.jakartabatavia-historicalsites.nl



Vischmarkt — Batavia.

5. See 1.

Postcard collection Dirk Teeuwen, Holland
www.jakartabatavia-historicalsites.nl



Batavia

F. B. Smitz, Batavia

Oude Havenkanaal in vogelvlucht

6. Sunda Kelapa, circa 1915



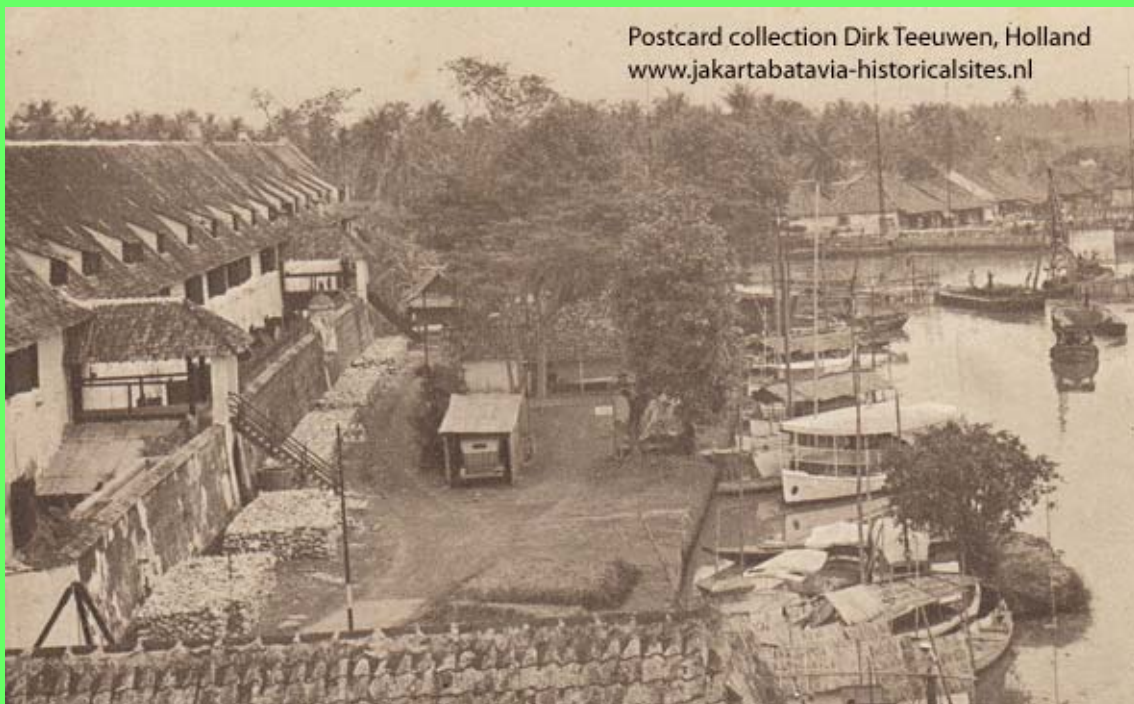
7. Sunda Kelapa southern end. Left the Pasar Ikan Bridge (JI Tongkol) and right the Watch Tower (harbour master's office), circa 1900



8. Watch Tower, circa 1900



9. Petjoen festival in front of Pasar Ikan, circa 1925
Petjoen was, and is, a ghost memorial event and, also, a boat racing festival.



10. Old warehouses (now Museum Behari) built between 1619 and 1670, photo 1927