

Rendezvous Batavia

Batavia's, Jakarta's Citadel Prins Frederik

Dirk Teeuwen MSc

See also my article "Batavia's Wilhelmina Park – Jakarta's Mosque Istiqlal".
Return to the index page and click Medan Merdeka. Account of sources: see my article.



1. Mosque Istiqlal from the watch tower "Monas" on Medan Merdeka, formerly Koningsplein (King's Square), Jakarta 2006



2. The northern part of Koningsplein (King's Square) / Medan Merdeka and its vicinity to the east, Batavia – Jakarta 1914.

Dirk Teeuwen, Holland

A bird's eye view and two details from this view:



3. A bird's eye view at the Katholieke Kathedraal (Catholic Cathedral) / Gereja Katolik at Waterlooplein / Lapangan Banteng and at Citadel Prins Frederik in the centre of Wilhelmina Park (right below); Batavia – Jakarta 1928



4. Detail A

Dirk Teeuwen, Holland

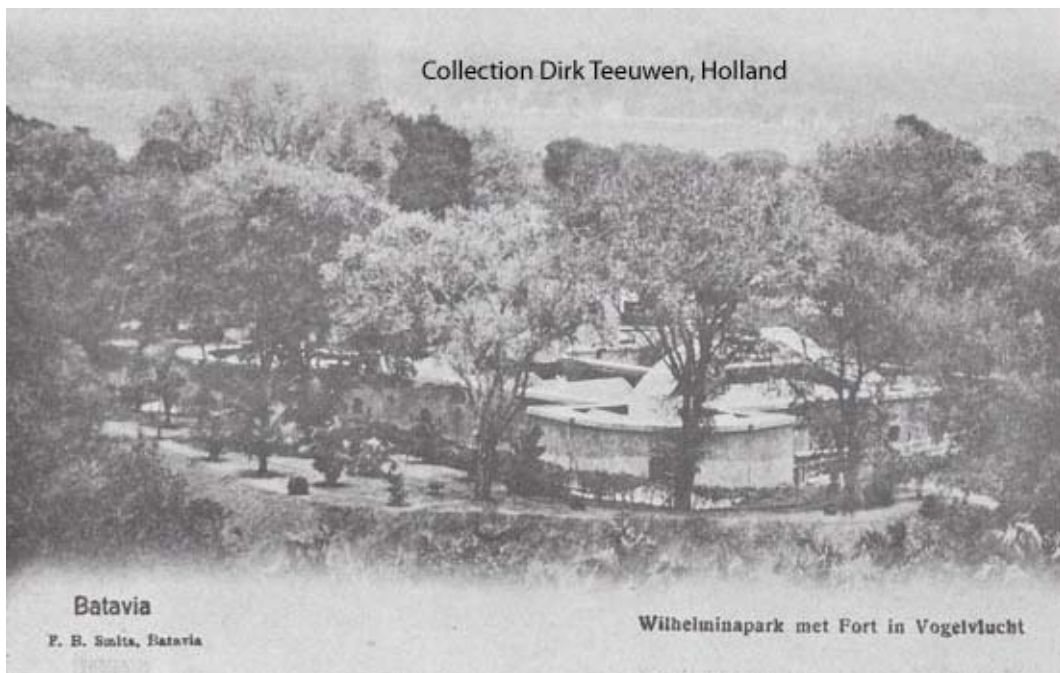


5. Detail B

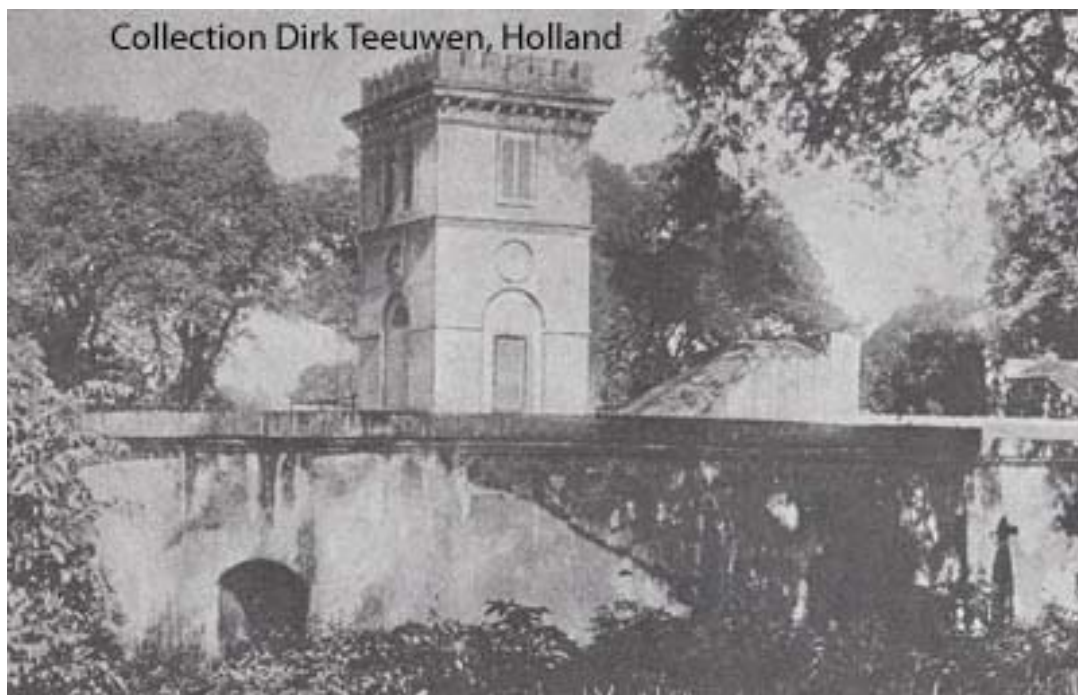


6. The (northern) main gate of Citadel Prins Frederik, Batavia Jakarta 1914
The fort was part of the so-called military defence line "Van den Bosch", after Governor General Johannes van den Bosch 1830-1833. The line proved useless. Until 1942 no enemy whatsoever showed up before the coast of Batavia. Maybe Van den Bosch feared the British without a cause.

Dirk Teeuwen, Holland

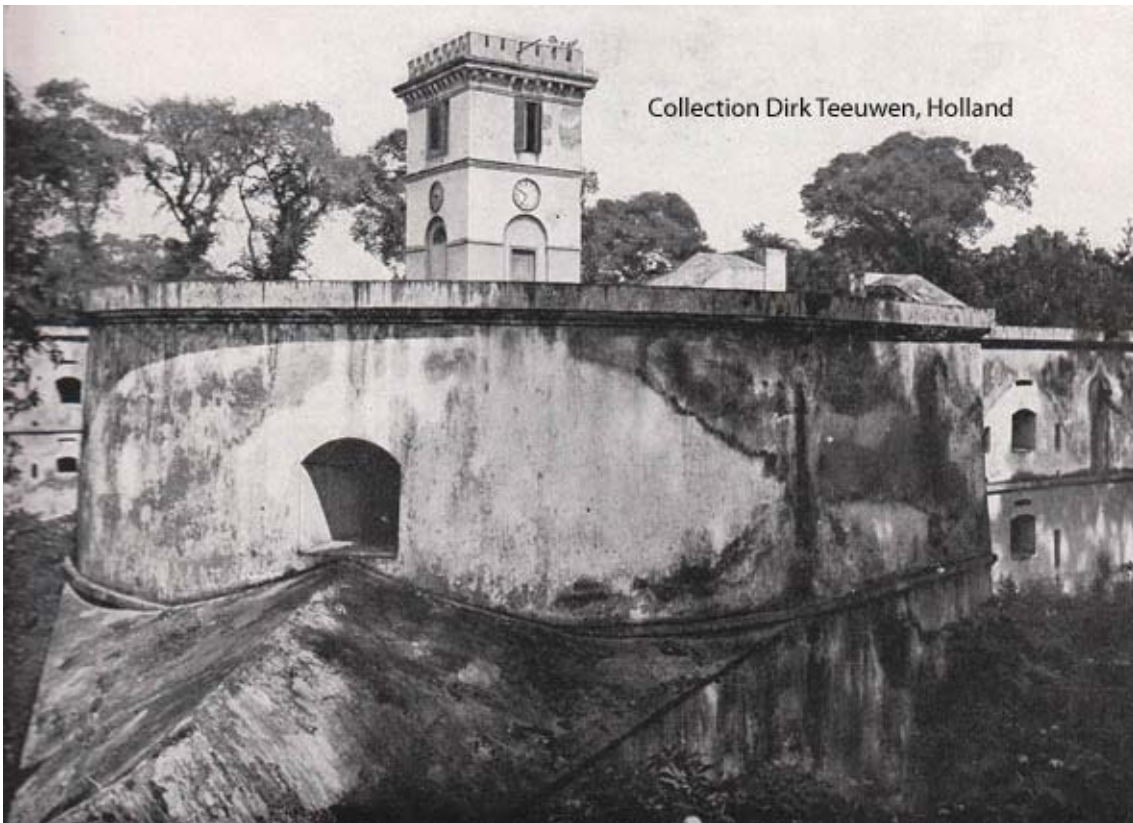


7. Two out of four bastions and at right the main gate, Batavia – Jakarta 1922



8. Detail of Citadel Prins Frederik, Batavia – Jakarta 1914

Dirk Teeuwen, Holland



Collection Dirk Teeuwen, Holland

9. The fort's north-eastern bastion and clock tower, Batavia – Jakarta 1924



Collection Dirk Teeuwen, Holland

10. A photo from 1924 taken from the Citadel's defence wall to the north. It shows a view at the Ciliwung River with a railroad (see my first picture) on this (right) side. At the other side of the river we see the Citadelweg (Citadel Road), now Jl Veteran 1.

Dirk Teeuwen, Holland



11. Once the location of Citadel Prins Frederik.

End

Dirk Teeuwen, Holland